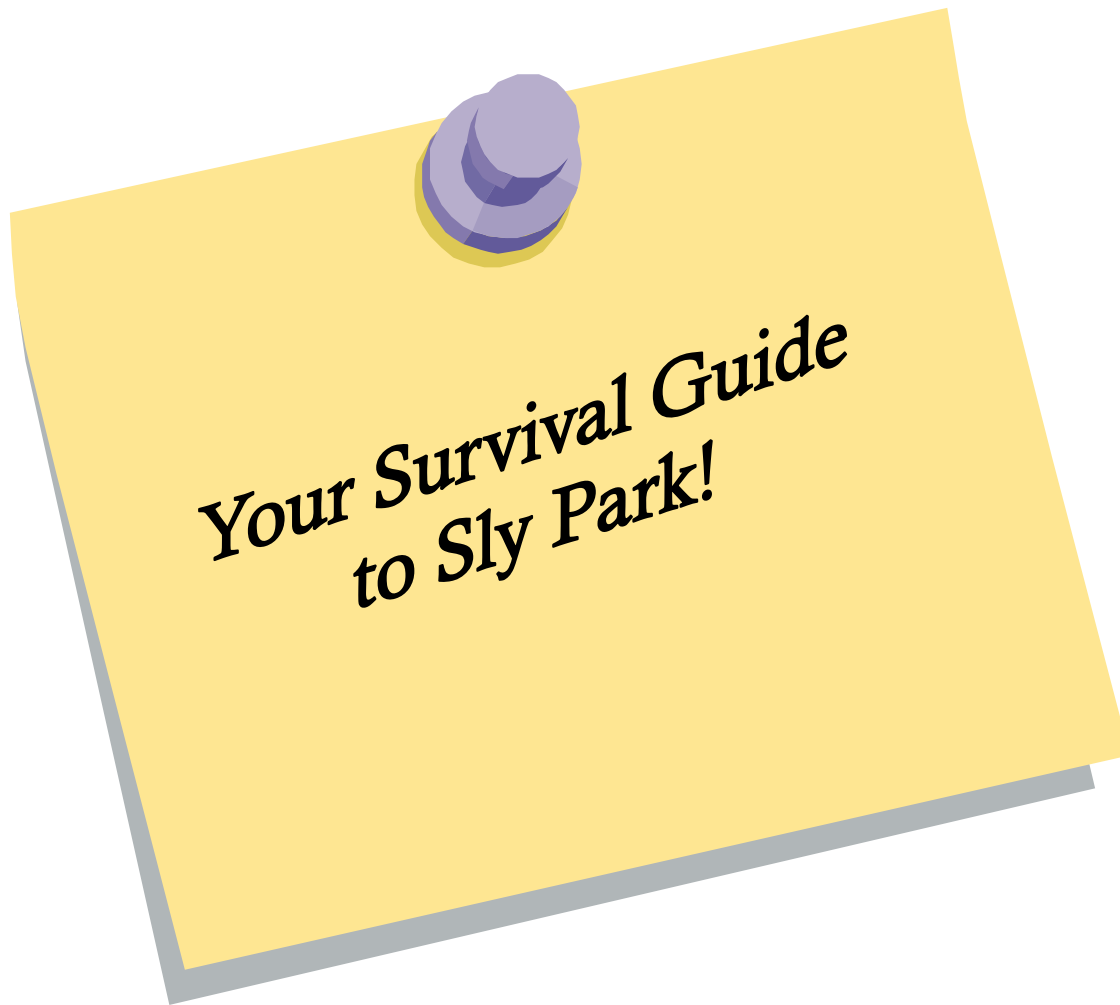




Program Overview  
&  
Visiting Teacher  
Responsibilities

Environmental Education Center



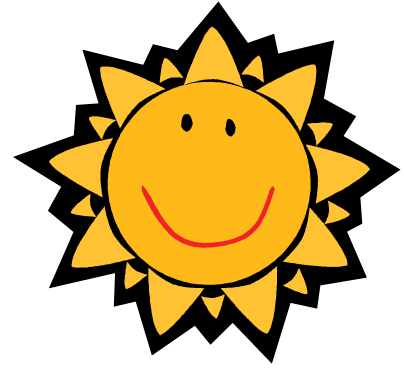
Sacramento County Office of Education  
P.O Box 269003  
Sacramento, CA 95826  
(916) 228-2485

Sly Park Environmental Education Center  
5600 Sly Park Road  
Pollock Pines, CA 95726  
(530) 644-2071

[www.scoe.net/slypark](http://www.scoe.net/slypark)

08/07

# Student Schedule



Arrival Day	Daily Schedule	Departure Day
11:00 am Student Orientation	7:00- Wake up	7:00- Wake up
Move into cabins	7:30- Breakfast	7:30- Breakfast
Eat Lunch	8:00- Cabin cleanup/ cabin inspection	8:00- Cabin cleanup/ cabin inspection
1:30 Teaching session with hike	9:00- Teaching session with hike. (Visiting staff meets with S.P Principal)	9:30- Awards Assembly
4:20- Fire Drill	11:45- Free Time	10:00- Last teaching session
5:00- Dinner	12:15- Lunch	11:30- Lunch
6:00- Class Meeting	12:45- Rest Time	12:15- Depart
6:30- Whole-Camp Activity	1:30- Teaching session with hike	
7:30- Gym, night hike or movie	4:30- Free time	
8:30- Bedtime snack, get ready for bed	5:00- Dinner	
9:30- Lights Out!	6:00- Class meeting	
	6:30- Campfire program	
	7:30- Gym, night hike or movie	
	8:30- Bedtime snack, get ready for bed	
	9:30- Lights out!	



## The Environmental Education Program:

The Sly Park Environmental Center is operated by the Sacramento County Office of Education. The campus is 50 miles east of Sacramento, six miles south of Highway 50 on Sly Park Road, in the Eldorado National Forest.

Students and their teachers participating in the weekday program leave school on Monday morning and return Friday afternoon. The curriculum extends the educational experiences of elementary children by providing an experimental, hands-on program in environmental education with three goals in mind:

Appreciation of the natural environment  
Interrelationships in the natural world  
Socially & environmentally responsible behavior



The academic program is based on the California Science Framework for grades five & six, plus the expertise of the teaching staff at Sly Park. All learning activities are led by teachers on staff at Sly Park. Curricular areas (math, science, social science, language arts, visual arts, physical education) are addressed thematically, focused on our three goals stated above. Developing and using these skills is emphasized throughout the program. We invite students, teachers, and their parents to visit Sly Park's website for information about the program, photos, weather news and teaching resource material: [www.scoe.net/slypark](http://www.scoe.net/slypark).

There are usually several schools attending Sly Park at the same time, which provides immeasurable opportunities for students to learn about getting along with each other and to value perspectives different than their own. This social growth is an invaluable part of the program. Visiting Teachers should pair each student with a partner (one group of three if needed) prior to coming to Sly Park. Student pairings are crucial. Be certain to choose partners to help minimize possible behavior issues. **Staple the partners' health forms together before you arrive.**

The teaching groups are arranged on a random basis upon arrival at Sly Park. The groups are balanced by boy/girl ratio and school mix. Each student will be with his/her partner. If you are aware of any students who should not be in the same group for behavior reasons, let the Sly Park staff know immediately upon arrival so we can make sure the student is assigned to the appropriate cabin and teaching group.

There are two major teaching sessions each day, the first in the morning (9:00-11:45) and the second in the afternoon (1:30-4:30). During these sessions, the Sly Park Teachers take the students out hiking and provide all learning activities. In the evening there is a ½ hour class meeting where teachers meet with their own students, a campfire program, and a recreation period. Lights-out for students is 9:30pm.

## Chaperones, Sickness, Behavior Policy

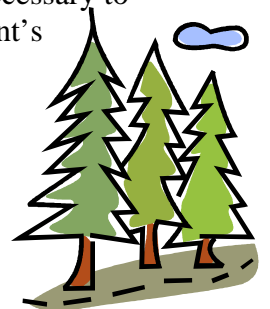
Students with health concerns and/or medication must have this information listed on their emergency form. Students on long-term medications should not change or discontinue their medications while at Sly Park. Check each form for appropriate signatures. All student medication will be kept in the Dining Hall and will be dispensed and logged by the visiting teachers. There are two exceptions: inhalers and bee-sting kits, both of which must be kept in the student's possession (a fanny pack works great) while he/she is at Sly Park. It is your responsibility as a Visiting Teacher to keep track of medications and make sure they are dispensed to your students.

Please inform the Sly Park staff in advance of any students with special needs. Encourage parents to call the Sly Park Principal with any questions about special health concerns. Children with health concerns (diabetes, epilepsy, asthma, etc.) attend Sly Park every week.

If children become ill while at Sly Park, we move them to "sick bay" in the teachers' cabin. Parents are informed, and together we decide if the child should go home, or rest and recover at Sly Park. **There is no refund if a child goes home due to "homesickness" or behavior problems.**

Chaperones will be living in the cabins with the students. As a Visiting Teacher, you will be selecting your chaperones and bringing them with you to Sly Park. You will need one male chaperone for every 12 boys attending and one female chaperone for every 12 girls attending. High School students can be substituted for no more than half of the adults of each sex, and should be good role models in 11<sup>th</sup> or 12<sup>th</sup> grade, who get along well with children, and have a record of responsibility at their high school. Parents also make excellent chaperones. Adults must be fingerprinted in accordance with district policy. Chaperones and cabin leaders stay free of charge, (provided they are within the required ratio). They receive an orientation when they arrive at Sly Park and are under the guidance and supervision of the Sly Park Principal throughout the week. These volunteers are a valuable part of the program and work very hard at Sly Park. The Sly Park staff & visiting teachers are their backup support!

Sly Park is a great setting for building responsibility, trust, and skills for getting along with others. We believe children are capable of making correct decisions and allow them to do so. We also expect them to take responsibility for their actions. When they arrive, students will be informed of Sly Park's behavior expectations and consequences of inappropriate behavior. All students will be held accountable for their behavior. We also believe that children are still children and their decision-making capacities are limited from a lack of experience and maturity. There is plenty of room to grow in this area while at Sly Park. The general Sly Park discipline plan is 3-step: 1) warning, 2) time out, and 3) go home. It is our aim for all students to succeed at Sly Park. Sometimes it is necessary to send a child home. Decisions regarding discipline are made jointly by the student's teacher and the Sly Park Principal.



## Accommodations:

There are eight student cabins, each housing approximately 24 children. The heated cabins have bathroom facilities with sinks, toilets, and private showers. The student cabins are connected to the teachers' cabin by an intercom. Two of the cabins are handicap accessible and are equipped with appropriate fixtures. If any of your students have special needs, let us know prior to your arrival so we can make sure the student is assigned to a fully accessible cabin.

The teachers' cabin is adjacent to the administration building. Most rooms are double occupancy. There is a small kitchenette with a refrigerator and microwave oven. You will need to bring a sleeping bag, pillow, and toiletries.

Sly Park is located at an elevation of 3500 feet. During the fall and late spring the days are warm and the evenings cool. From October to May, inclement weather can occur, sometimes resulting in some snow. During the summer months, it is warm although it is usually 10-15 degrees cooler than Sacramento. Of course, in the mountains, weather can vary! Most of the activities at Sly Park occur outdoors so bring appropriate clothing. You will need comfortable walking shoes. Follow the clothing list for the students and you will be well prepared!

## Your Responsibilities while at Sly Park:

During the day, Visiting Teachers are encouraged to go on any of the hikes with the students as they choose. The Sly Park teachers welcome your presence. If you need to leave campus for a short period during the week, that is acceptable, as long as you have cleared this beforehand with the Sly Park Principal. At night, the supervision of the students is the responsibility of the Visiting Teachers and the Chaperones, and you must remain on campus.

Your duties will include:

1. Staff orientation meeting at 1:30 pm on your arrival day, and a daily short staff meeting at 9:00 am with the chaperones and Principal.
2. Daily ½ -hour class meeting with your students (after dinner, 6:00-6:30 pm) to check in with them and see how they're doing.
3. Dispense medication and assist students who are sick or have behavior problems.

Other duties you will share/rotate with other Visiting Teacher are:

1. Supervise outdoor basketball courts for ½ hour before lunch &/or dinner.
2. Assist at the climbing wall as a "belay" (4- and 5-day program only).
3. Help supervise the students at the campfire program.
4. Supervise students for 1 hour of evening recreation in the gym, movie room or arts & crafts.
5. Supervise cabin area during "night duty" from 8:30 pm until students are asleep.



## Logistics:

Your school must send to Sly Park an attendance agreement and deposit with a “final number” of students who will be attending. The school will be invoiced for no less than 90% of this number, and may not bring more than 110% of this number unless space is available. It is very important that you be as accurate as possible, so be sure to talk this over with your principal so that together you decide on the most accurate number.

The Sacramento County Office of Education requires that you bring at least one teacher from your school for every 34 students attending. Parents may not be sent in their place. The teachers need to be on campus during the time that the students are here. It is not acceptable for a teacher to go home at night or leave during the week, leaving other teachers who have their own students to cover for them. If you can't be here, your school must provide a substitute. There is no charge for teachers to stay at Sly Park.

You will need to make your own transportation arrangements. Plan to arrive at 10:30 am. (Participants in the 3-day program will need sack lunches for arrival day.) Departure is 12:00 noon. If you are attending Oct.-May, please bring snow chains for your personal vehicle & have your chaperones do the same. If the weather is questionable, please call Sly Park the morning of your departure for travel information. Know exactly how many Students actually arrive at Sly Park.

Feel free to call us to find out what other schools will be attending with you. It's great to set up a pen-pal activity to get the students corresponding with each other before they meet.



Sly Park is a public school and is subject to the same laws as your own school. Alcohol and tobacco, by law, are not permitted on campus.

On your departure day you will be asked to complete an evaluation of the Sly Park program. Give us as much information as you can. We discuss your feedback and want to meet your needs, and hear your ideas.

If you have any questions, please call us at (916) 228-2485. We want to do our best for you and your students.

